

QUALITY EVALUATION FOR NORMAL PIPE WATER AND FOR WATER THAT WENT THROUGH REVITAN® ATTACHMENT with diagnostic method of sensitive crystallization

The technique of sensitive crystallization is a diagnostic method for studying the quality of water.

With the above stated technique we can evaluate the original quality of water as well as the effects of various processing procedures, such as regeneration or revitalization, to which the water is exposed.

Supposedly the physical procedure that leads to shaping of configurations in the sensitive crystallization is connected with special characteristics of clusters that are present in the water being tested directly. (source: www.cristallizzazione.it)

Sensitive configuration is implemented with a mediator – copper sulphate, to which regular pipe water and water that went through REVITAN® attachment was added.

The test shows the evident and large differences in the structure.

From the results of the test according to the method of sensitive crystallization we can conclude that the processing of water with REVITAN® attachment has a good influence on the water quality and on its vitality, which can be seen in the reorganization on the molecular level and in the re-energizing.

FIGURE 1

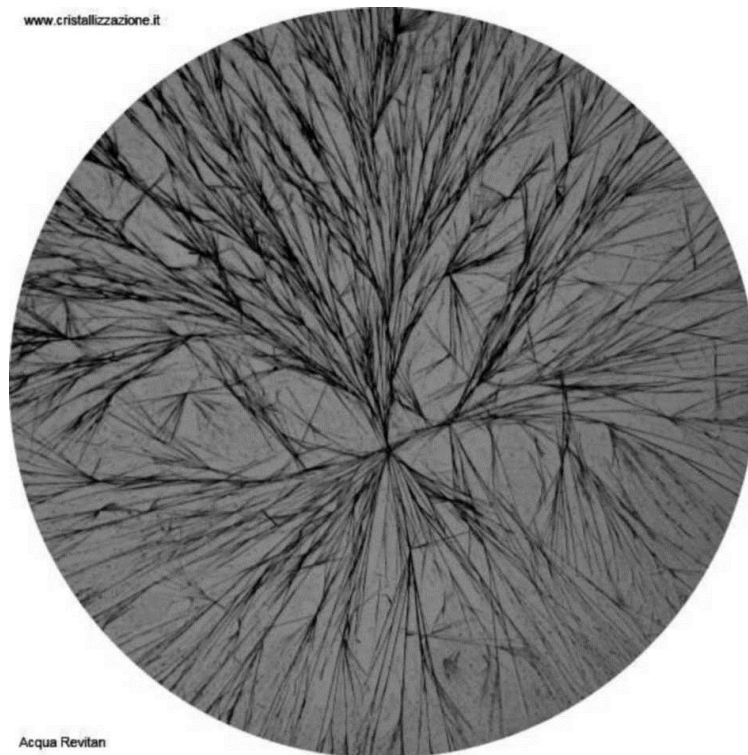


Figure 1: Water through REVITAN® attachment:

The structure of crystallization for the sample of Revitan water shows the formation of crystals organized correctly in four-edged core and in the system of primary and secondary branches. The crystals are longer, cleaner and clearly divided.

FIGURE 2



Figure 2: **control sample -water without REVITAN® attachment**, shows typical dendrite spreading of crystals, non-branched growth, full of ray-shaped pseudo-cores. The figure shows gaps of irregular shapes.

Source: Cristallizzazione Sensibile con acqua REVITAN, Maurizio Peruzzi, **Associazione per la Cristallizzazione Sensibile, Italia**